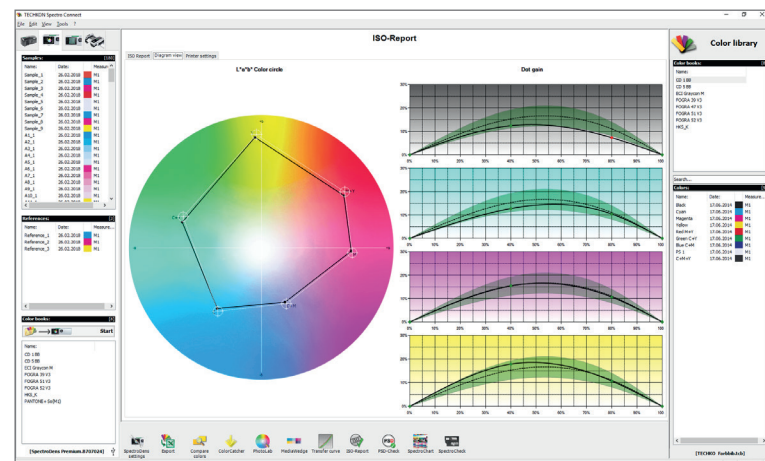
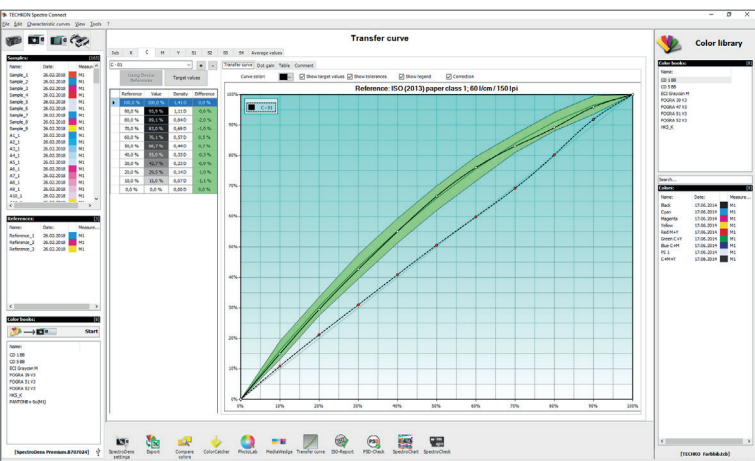
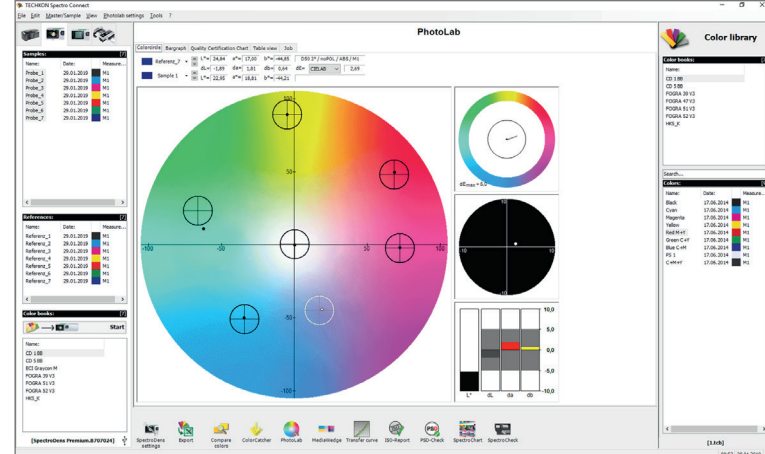
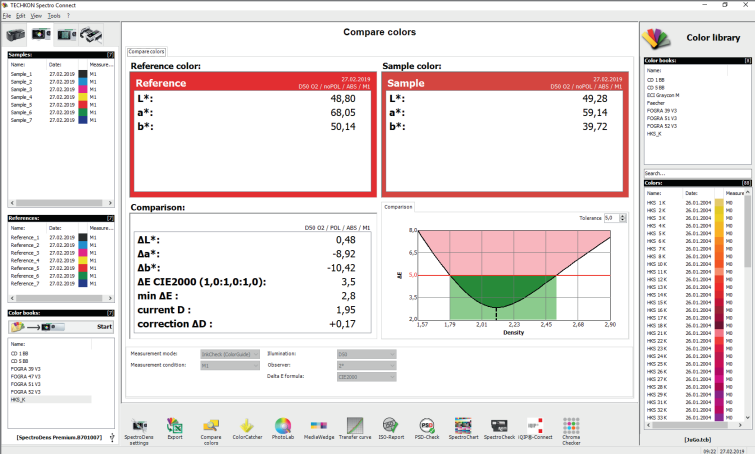


TECHKON
Erfolg ist messbar



Software for TECHKON Spectro Devices



TECHKON SpectroConnect Software for all Spectro devices

The Windows software TECHKON SpectroConnect, included in the content of delivery, establishes the connection between the measuring device and the PC via the USB connection or via a WLAN connection (optional with SpectroDens). Data processing of the measured values on the PC is very comfortable and data can be transmitted directly to Microsoft Excel™ or any other application with editing function.

The program also serves to remotely control the device for settings, lock functions, perform updates and save the display content for documentation purposes. In addition, TECHKON SpectroConnect offers fast and easy exchange of digital color libraries, as well as measured references and samples. It is also possible to import and export color data in standardized CXF format.

Depending on the device type, SpectroConnect also includes a wide range of other applications, such as:

- Modules for creating printing and plate characteristics
- Full colorimetric quality control
- Check for compliance with ISO standard 12647
- Evaluation of digital prints according to PSD
- Proof control by evaluation of the Fogra media wedge
- Conversion of CIE L*a*b* color values into CMYK dot percentage values and RGB values based on ICC

- Comparison of two colors with reporting function
- Evaluation of test charts for ICC profile calculations
- Tool for checking and certifying the device specification

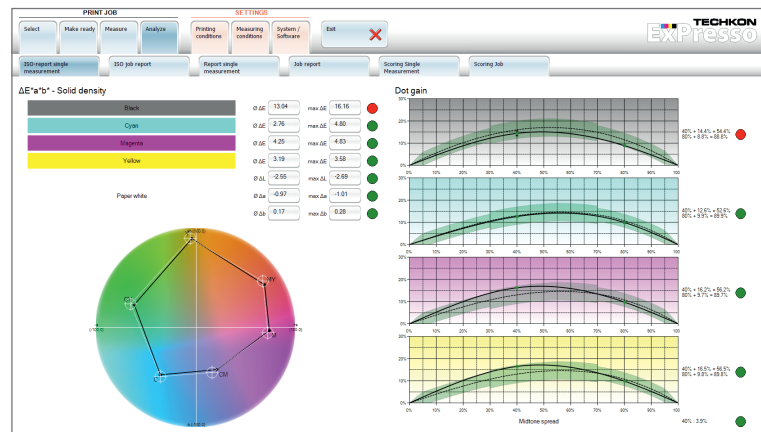
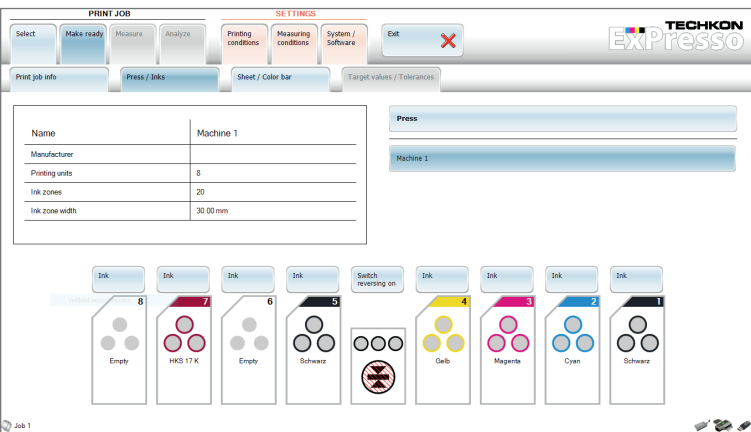
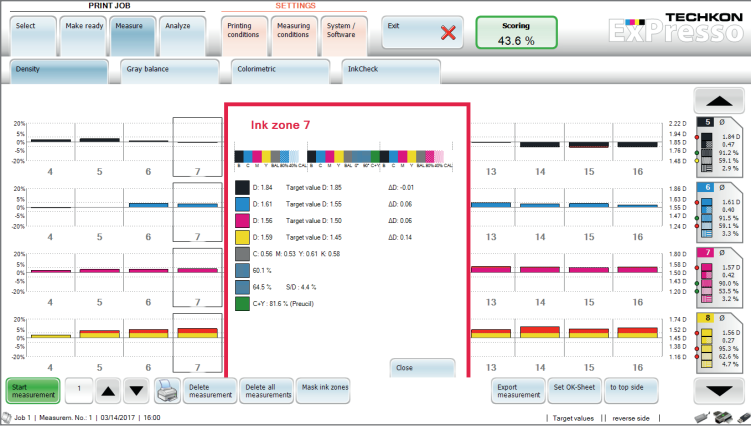
Almost all modules have a report and photo function to document the results.

With the characteristic modules, the data can be output in Harlequin or ISO 18620 format and thus imported into all modern RIPs.

When using TECHKON SpectroPlate, the program can perform metric measurements in the high-resolution video image and save the image in jpg or png format.

The program supports 14 languages and includes the manuals of the supported devices in PDF format.

TECHKON SpectroConnect, despite its valuable and cost-reducing use as a universal quality control agent, is included free of charge in the content of delivery of all TECHKON devices of the Spectro series.



TECHKON ExPresso 4 Software for SpectroDens Premium and SpectroDrive

TECHKON SpectroDrive scans print control strips on printing sheets in seconds, making it the ideal quality control solution for high-speed packaging printing.

The trend towards smaller print runs, shorter delivery times and consistent color quality must be taken into account today by print service providers and packaging manufacturers in order to gain a competitive advantage. Shortening set-up times and avoiding mistakes and rejects are crucial for a satisfactory profitability. With simple hand-held measuring instruments one is often overwhelmed with these high demands.

By using the new generation of scanning color measuring devices in the quality control process directly at the press, print service providers and packaging manufacturers can guarantee reliable color control, with shorter makeready times and less waste.

The SpectroDrive measurement results are displayed directly on the screen using the TECHKON ExPresso 4 software, allowing printers to make corrections immediately, even before color deviations can be seen with the eye. All color measurements are made in less than 10 seconds up to 105 cm sheet width.

The self-explaining Windows software TECHKON ExPresso 4 is quick and easy to use via its touch-screen user interface and now supports 16 languages for easier operation.

The program supports printing machines of all manufacturers up to a sheet size of 206 cm (80 inch) sheet width. Any print control strip with equal patch width can be used. An integrated print control strip editor allows the support of customer-specific control elements.

Process colors, special colors such as PANTONE®, substrate, dot gain, gray balance and density values are measured and immediately displayed clearly in ink zone specific diagrams.

The range of functions of the TECHKON ExPresso 4 software includes the measurement of spot colors, display of up to 16 printing units, front-side and reverse printing, evaluation according to color density, colorimetry, gray balance and calculation of the density adjustment for the lowest delta E.

The program supports key industry standards, including optical brightener M1, M3 for wet ink densities as well as ISO 12647, PSO, IDEAlliance G7, GRACoL and SWOP 2013.

The evaluation module can be used to create and print quality reports according to ISO 12647 or customer-specific standards. For a quick assessment of the entire order at a glance, a scoring with its own definition of priorities and weighting is available. Furthermore the program now supports 16 languages for easy operation and offers touch-screen support.

All color references are managed in the color library of the software. Importing CXF3 color data is quick and easy. All job data including OK sheets are automatically stored in the integrated database, making setting up of repeat jobs a snap, allowing set up of new jobs within seconds.

This is just an excerpt from a list that documents the performance of the entire system. Thanks to its modularity, the software can be upgraded for further applications. The measurement data can be exported to other programs via industry standards such as JDF, for example to realize direct online connections for automatic ink key control on printing presses.

The TECHKON ExPresso 4 software now also supports the SpectroDens Premium hand-held measurement device, which has a scanning function and features scan measurements up to 200 patches and sheet formats up to 120 cm (47 inch). It makes the entry into quality control attractive even for smaller companies.

The hand-guided device is mounted on a track that ensures the exact scanning of the print control strip and the easy and fast evaluation of all color patches.

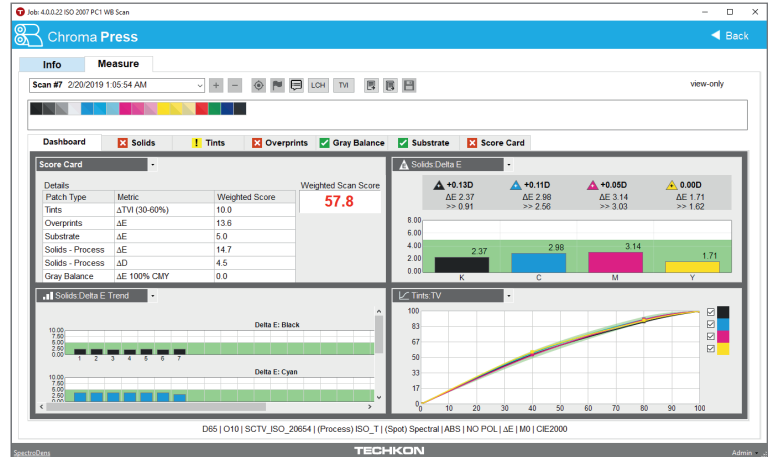
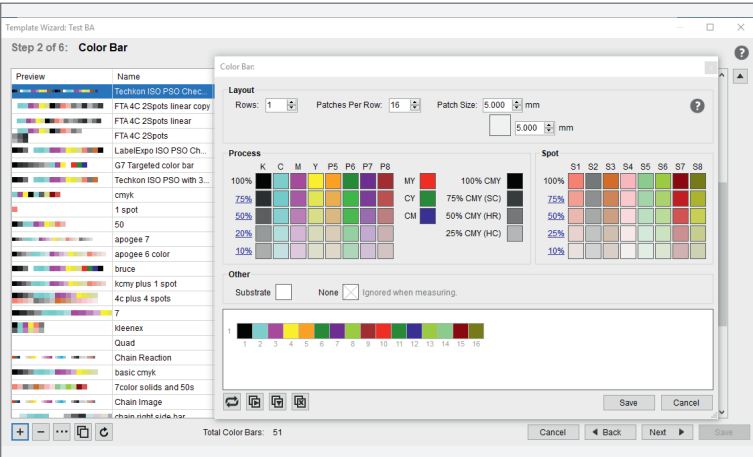
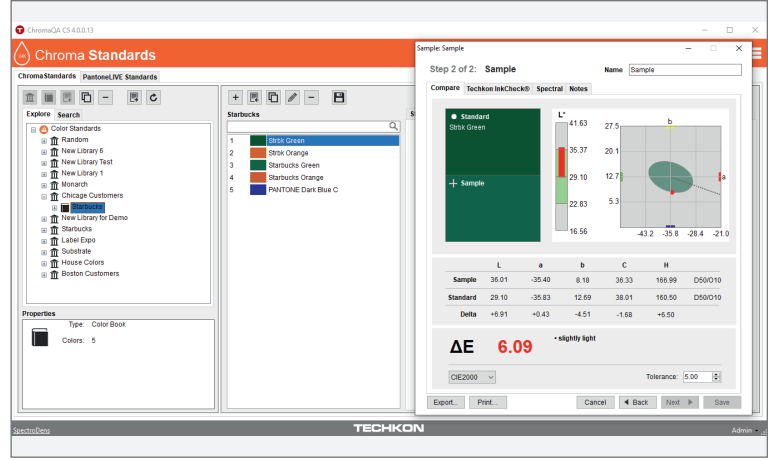
The established standard device SpectroDens Premium can thus be upgraded to a very powerful and high-end quality control system.

ExPresso Basic

- Ink zone specific density display
- Color density for CMYK and spot colors (spectral density)
- Densitometric gray balance
- Dot gain
- Dot area
- Printing contrast
- Slur/doubling value
- Target values and tolerances
- OK-sheet
- Front- and reverse-printing (works with any color bar length)
- Display of single measurements when used as a hand-held device
- Measurement data export (e.g. JDF-format)
- Statistical analysis, report generator
- Supports up to 6 printing units

ExPresso Pro

- Ink zone specific colorimetric CIE $L^*a^*b^*$ and $\Delta E^*a^*b^*$ display
- $\Delta L^*a^*b^*$
- CIE $L^*C^*h^*$
- $\Delta L^*C^*h^*$
- InkCheck: recommendation for ink key setting
- Display and evaluation according to ISO 12647 (PSO)
- GrayGuide (gray balance) according to Gracol G7™
- OBA-Check
- Supports up to 16 printing units



TECHKON ChromaQA Software for SpectroDens Advanced and Premium

ChromaQA is a color quality software solution that provides packaging and commercial printers with a powerful set of tools designed to monitor the color quality of jobs on press, reduce the number of re-makes, and recognize a significant savings in ink and paper by detecting problems early in the print production process.

ChromaQA gives users the ability to define aim values and color tolerances for Density, Delta E, Dot Gain, and more, providing immediate feedback on how well the job is conforming to industry or customer specified tolerances. Create detailed trending and statistical reports and delight your customers by meeting their exact color specifications.

ChromaQA utilizes a client/server architecture. All customer data is stored, backed-up, and retrieved from one centralized location on the Amazon AWS cloud server. The client/server architecture allows printers with a single press, multiple presses, and even multiple print facilities, to remotely create, manage and monitor customer jobs in real time or at the completion of a press run.














How it works

1. A job is created which defines the key colors to be monitored along with the reference or aim values for those colors and customer specific pass/fail tolerances.
2. The job moves into production where live, measured, data is compared to the reference in real time and the pressmen is guided to reach the desired color standards.
3. When the run is complete, Summary and Trend reports can be generated verifying adherence to customer tolerances or industry standard printing conditions.

Software for TECHKON SpectroDens

External providers

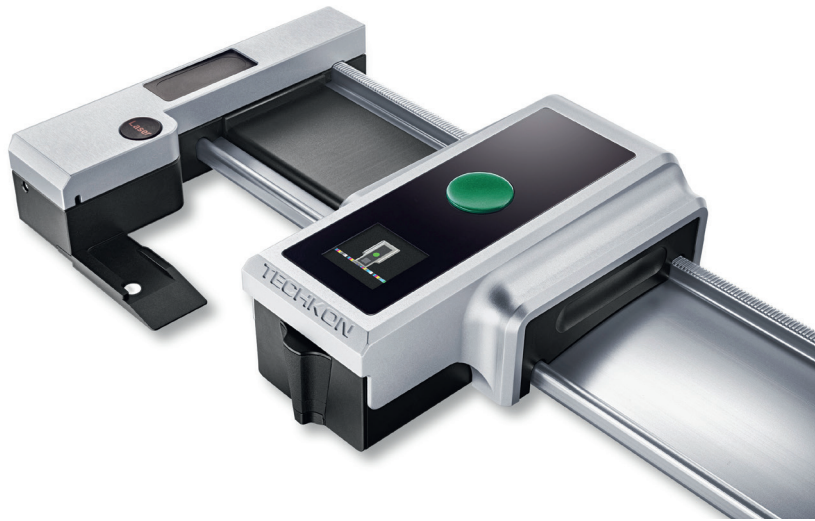


Company	Website	Software for TECHKON SpectroDens
	www.alwancolor.com	Alwan PrintStandardizer 5.2.0 (rev 3563) and later; Alwan PrintVerifier 5.0.0 (rev 2133) and later - Scan function supported
	www.basiccolor.de	basICColor Catch 5.0, PC and Mac version; basICColor PSOrady, PC and Mac version - Scan function supported
	www.pressign.com	pressSIGN PrintBuyer 8 and pressSIGN Standard 8
	www.cgs-oris.com	'ORIS Certified//Web' and 'ORIS Evaluate'
	www.chromachecker.com	ChromaChecker Capture
	www.colorlogic.de	ColorLogic ZePrA; ColorLogic CoPrA; ColorLogic ColorAnt; PC versions
	www.measurecolor.com	MeasureColor 3.x - 18.x.
	www.efi.com	Color Profiler Suite
	www.gmgcolor.com	GMG OpenColor from Version 2.1.3
	www.heidelberg.com	since Color Toolbox 18, Multicolor Toolset
	www.impact-medien.de	iQIP® print; iQIP® proof; iQIP® packaging; iQIP® meascal; iQIP® addon platecorrection
	www.ipm-print.de	IPM PrintProcessControl®, Windows XP - Windows 8 - Scan function supported
	www.matchmycolor.com	matchmycolor Colibri® ColorMatch – Ink formulation; matchmycolor Colibri® ColorQuality – Color monitoring
	www.mellowcolor.com	Mellow Colour PrintSpec; InkSpec; FlatLine; ProofSpec – Scan function supported
	www.serendipity-software.com	Blackmagic, Megarip, Veripress
	www.spotonpress.com	SpotOn! Flexo Windows, version 2.6.5
	www.ugra.ch	Ugra PSO Analyzer (UPPCT) - PC version

The copyright of the logos lies with the respective company.

Software for TECHKON SpectroDrive

External providers



Company	Website	Software for TECHKON SpectroDrive
 Bodoni Systems the colour experts	www.presssign.com	pressSIGN Pro 8 and pressSIGN GPM 8
 MeasureColor Color management for print & packaging professionals	www.measurecolor.com	PressView / MeasureColor 3.x - 15.x
Digital Information	www.digiinfo.com	InkZone Move Version 4
 iQIP® impakt medien	www.impakt-medien.de	iQIP® print; iQIP® proof; iQIP® packaging; iQIP® meascal; iQIP® addon platecorrection
 IPM	www.ipm-print.de	IPM PrintProcessControl®, Windows XP - Windows 8
 mellow COLOUR	www.mellowcolor.com	Mellow Colour PrintSpec - CMYK / ISO 12647; Mellow Colour InkSpec - Special Colours
 Printflow	www.printflow.eu	Printflow Color Control SW
 System Brunner	www.systembrunner.com	System Brunner Instrument Flight® online; Basic / Premium; incl. Gray Balance control

The copyright of the logos lies with the respective company.

Erfolg ist messbar

TECHKON GmbH
Wiesbadener Straße 27
D-61462 Königstein
T +49 (0) 6174 92 44 50
info@techkon.com
www.techkon.com